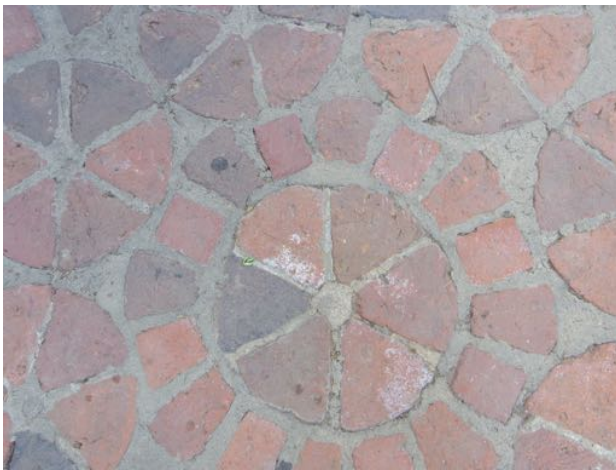


## Shadow House



The eight-sided garden gazebo between the Bishop's Garden and Lawn was designed by Cathedral architect Philip Frohman. It was built with stones recovered from the demolition of Red Top – President Grover Cleveland's nearby summer home. The pie-shaped bricks, that form the floor, came from "Ellerslie" plantation in southeast Virginia. Metal artist Samuel Yellin designed the weather vane that sits at the peak of the slate.

There are eight views of the garden through Gothic arch windows. A small bronze statue of

baby Pan, sculpted by Edith Parsons, was relocated to a pedestal at the entrance to the Shadow House in 2017 in memory of Rowan LeCompte, Cathedral stained glass artist.

Shadow House was dedicated on April 27, 1928. The funds to build Shadow House were donated by the Bishop's Guild as their offering to the Bishop's Garden.

At the time of the Shadow House construction, Mrs. Charles Mason Wilkes was the secretary-treasurer of the Bishop's Guild. A tablet, with the following inscription, was to be placed inside the Shadow House, but it cannot be found.



BRASS TABLET IN SHADOW HOUSE  
Designed by Florence Bratenahl, executed by Gorham & Co.

From a booklet entitled "Historic Trees, Boxwood, Yew, and Stone; Some Unusual Material on a Cathedral Hillside," by Florence Bratenahl, 1932.

